

Turning Point, Version 8 and Microsoft PowerPoint 2016

This document affects the use of PowerPoint and TurningPoint software (clickers) **starting in the Fall 2017**. **You can complete the steps below anytime between now and then to be prepared for the upcoming software updates.**

There isn't a substantial difference with the new software versions, but you will have to follow the steps below before you can use this new software combination.

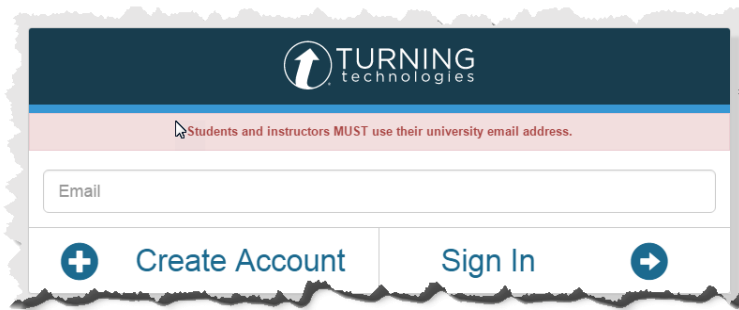


1. Create a "Turning Account"

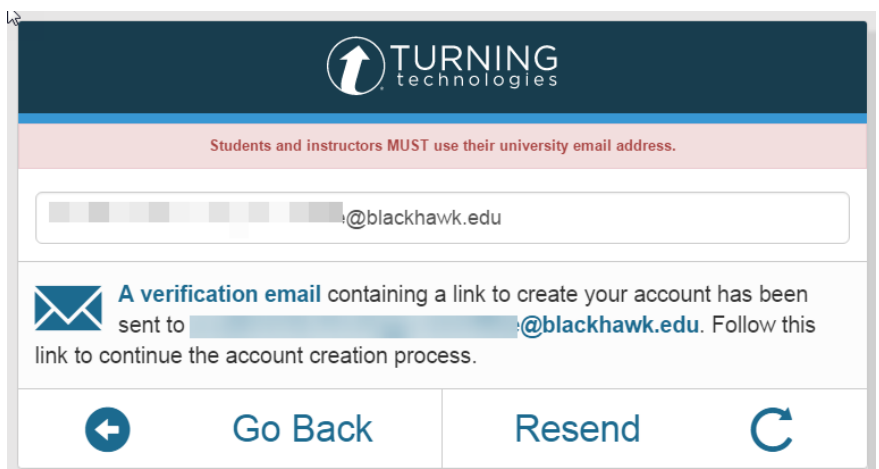
<https://account.turningtechnologies.com/account/>

Enter your "**blackhawk.edu**" email address
[You must use your BTC institution email address]

Click "**Create Account**"

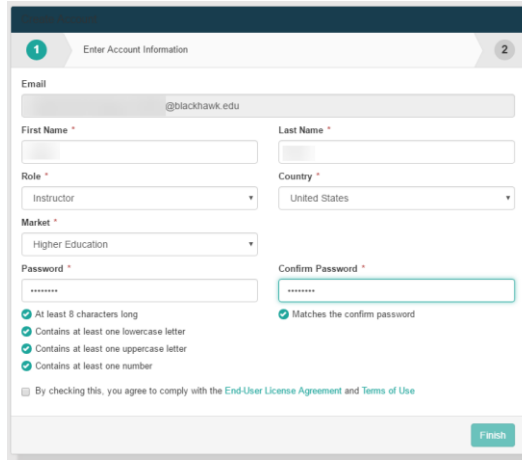


You will receive an email from Turning Technologies with a link to verify your account creation. Click that link to continue the account creation process...



Click the verification link in your email which brings you to Account Information

- Fill in all fields
- Click the checkbox accepting the End-User License Agreement and Terms of Use
- Click **“Finish”**



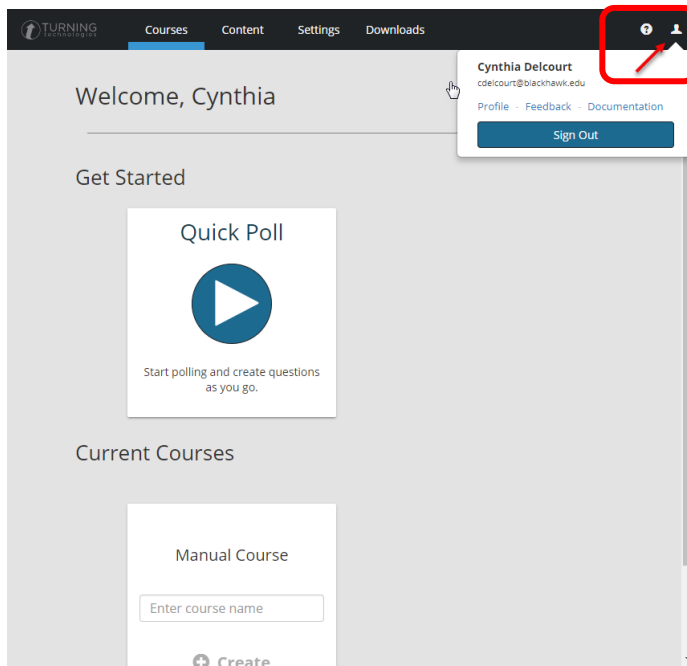
[You do NOT have to register a license code OR device ID]

The “Quick Poll” is for a version of TPC that we do not license.

You can sign out now.

Click the avatar in upper right > click **“Sign Out”**

Now that your account has been created, technically, you won't have to return to this website.



I.T. will install the software on your BTC desktop/laptop and the instructor stations in the classroom

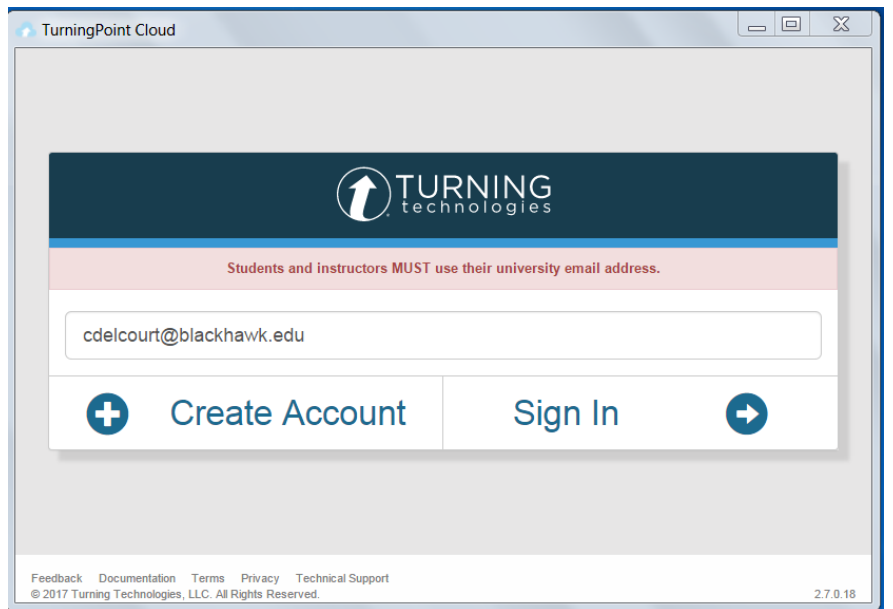


When you click the application you'll be prompted to login with the profile you created online



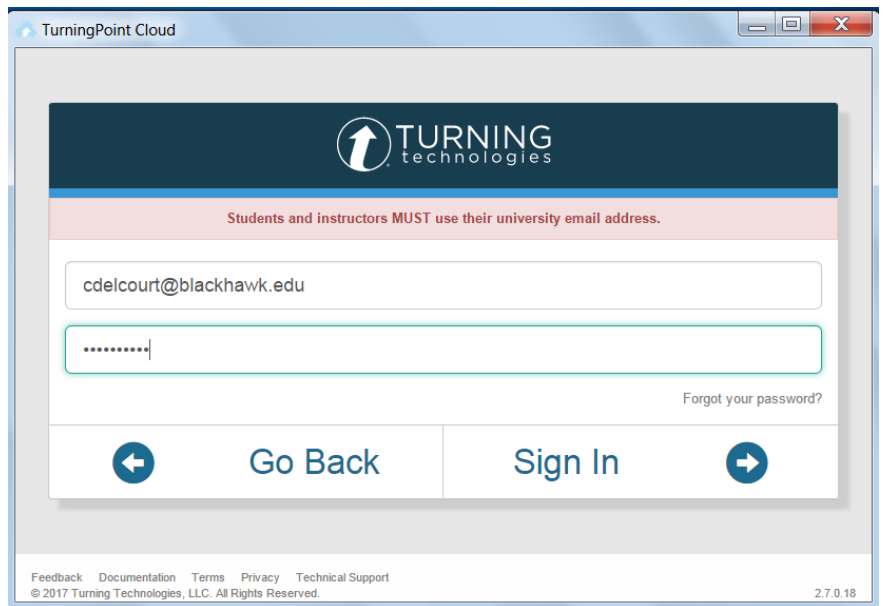
Enter your username (BTC email address)

Click **“Sign In”**

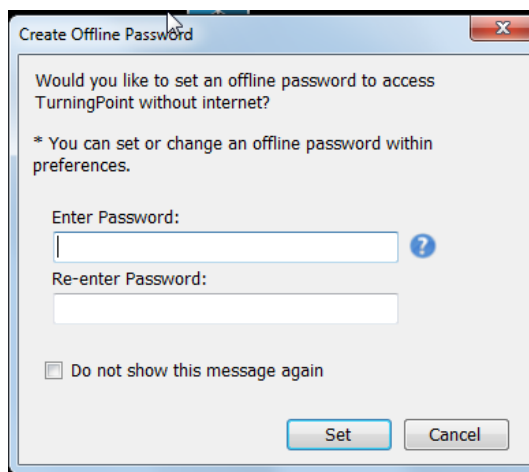


You'll then be prompted to enter your password

Enter your password, then click **“Sign In”**



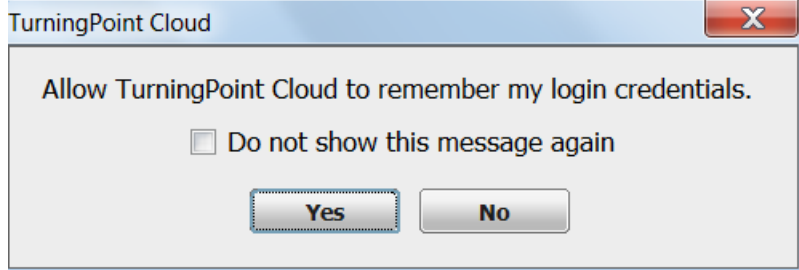
Provide a password to access TurningPoint without Internet connection – for access anytime.



You'll be asked if you want TurningPoint to remember your credentials.

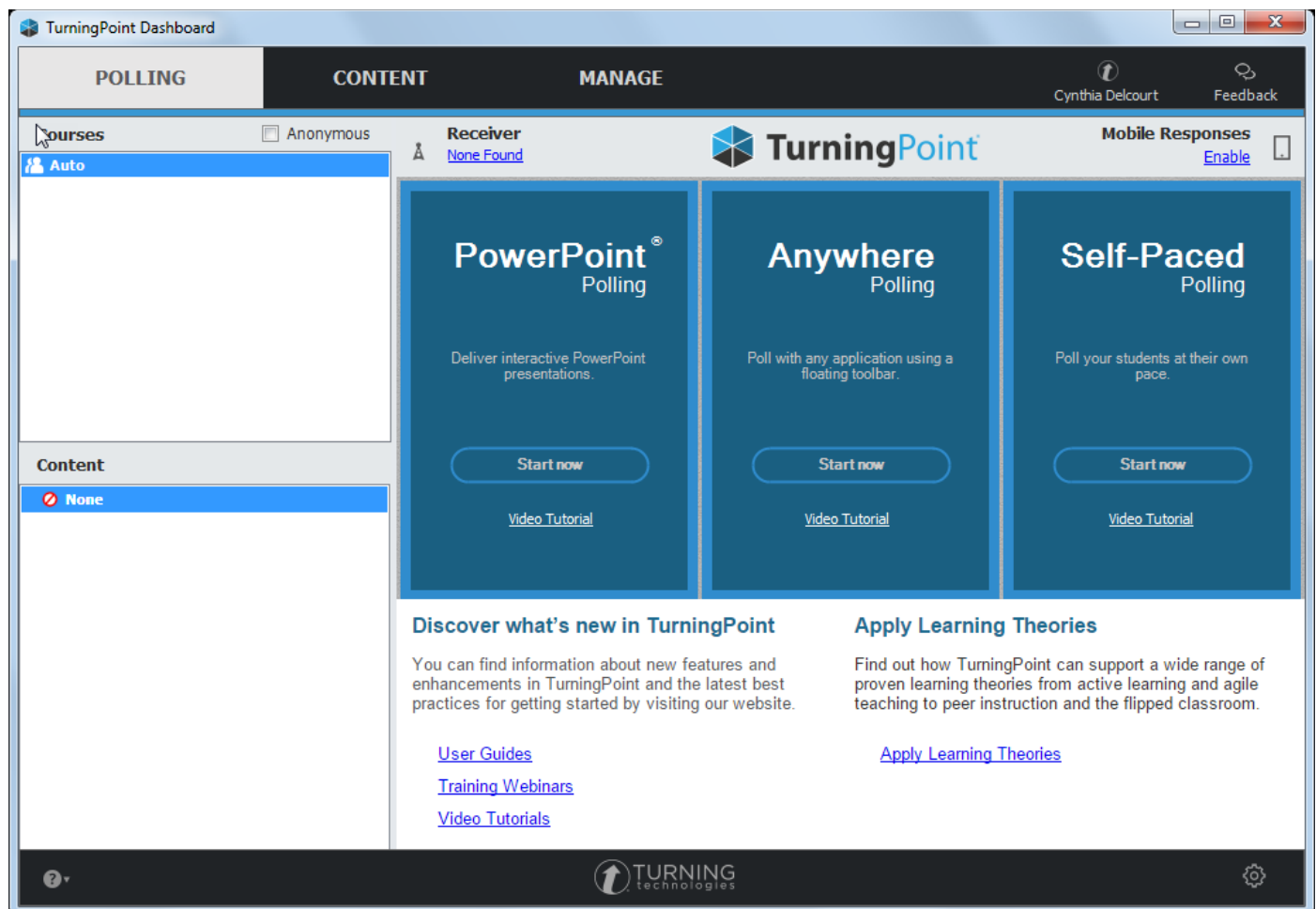
If on a classroom instructor station, click the checkbox and choose "No"

Otherwise, it's your choice to allow.



Next, the TurningPoint dashboard appears

It's a different look from our older version but you will still only choose "PowerPoint Polling". Click "Start Now" to open PowerPoint. Feel free to click the "Video Tutorials" or "User Guides" links provided on the Dashboard.



For new users, contact the TLC for a personal training on how to get started.

TLC Contact Info: cdelcourt@blackhawk.edu 608-757-7632